

Log Cabin Scarf

By: Robin Conrads (who didn't invent this, just wrote the instructions)
Image of threading and lift plan from notsoigidweaver.com software.

You will need:

- Loom: 15" or wider
- Reed: 10 dpi (40/10cm)
- Light colored 8/2 cotton, 2.7 oz (76.5g),
- Dark colored 8/2 cotton, 2.7 oz. (76.5g)

Total warp ends: 120 (doubled)

Warp length: 90"

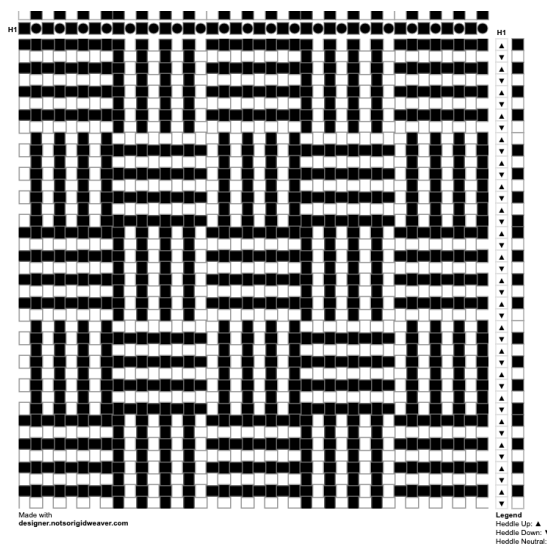
Finished length: 70" + fringe

Width in reed: 12"

Finished width: 10 1/2"

Washed length: 65"

Washed width: 10"



Warping

- Count 32 slots from the middle to the left and begin in the hole next to that slot. Either one is fine. Starting in a hole gives you a neater selvage.
- D = dark yarn, L = light yarn
- Block A: Start with 8/2 dark cotton doubled alternating DLDLDDL (Each hole and slot will have two threads.)
- Block B: Start with 8/2 light cotton doubled alternating LDLDDL. You will see that each change in blocks will have two ends of the same color. That's what makes the magic!
- Alternate Block A and Block B 15 times, ending with Block A.
- Don't thread the last slot so your last thread is in a hole.

Weaving

Decide if you want fringe or a rolled hem.

- Fringe: Leave about 6 inches of space for fringe at the beginning and end, and leave a tail 4x the width of your scarf in the first and last pick for hemstitching.
- Rolled Hem: Weave 18 picks of light plain weave and a few inches of waste yarn.

Begin with the dark yarn (leaving a tail of 4x the width if you are hemstitching) and weave Block A, one pick each of DLDLDDL. Be sure to link the threads together (See Tip below). Weave Block B, one pick each of LDLDDL. Weave a few inches then hemstitch if that is your choice. Continue weaving to 70". Finish with hemstitching, if desired. For a rolled hem, weave 18 picks of light plain weave and a few inches of waste yarn. Machine stitch the ends of your weaving before finishing. The rolled hem can be done before or after wet finishing. Make sure they are both turned the same way (ask me how I know this!).

Tip for linking thread: *If the previous thread is up, put the active shuttle in front of the other one. If the previous thread is down, put the active shuttle behind the other one. When you throw the next pick the threads should link.*

Finishing

Soak in warm water and a little laundry soap for 15-20 minutes. Rinse well in cool water and squeeze most of the water out. Try to avoid wringing it. Open up the cloth and shimmy it around a little bit to get wrinkles out and spread the yarn evenly. Dry on medium heat until almost dry, then iron and enjoy your beautiful new scarf.

If you have any questions, please email Robin at robin.conrads@gmail.com