

Projects: Changing Lanes Scarf

Weave structure: Twill

Source: Handwoven magazine Summer 2024

Reed: 12

Sett: 28 epi. Weft about 23 ppi

8 Shafts and 8 Treadles

Scarf dimensions on loom: 21 1/3" width and 96" length (under tension)

This is a great stash buster project because most colors use small quantities.

Yarns: 10/2 pearl cotton

Notes: You will be switching back and forth frequently between the black and blue wefts, so it is best to carry the inactive weft yarn up along the selvedge.

Warp length: 594 ends 4-yards long. This includes the floating selvedges, 10" for take up, 38" for loom waste and fringe.

Use one black end and one white end for the floating selvedge.

Warp color order		3X				2X			4X			3X		3X			2X	2X	4X					
Gold	8			8																				
Magenta	8					8																		
Fuchsia	8							8																
Bali	8								8															
Yale Blue	8									8														
Green Yellow	8											8												
Caribbean	8													8										
Indies Orange	8															8								
Lt. Orange	8																		8					
White	256	8		8		8		8		8		8		24		8		8		8		8		8
Black	264	8	8	8	8	8	8	8	8	8	8	8	8	8	8	8	8	8	8	8	8	8	8	8
Total	592																							

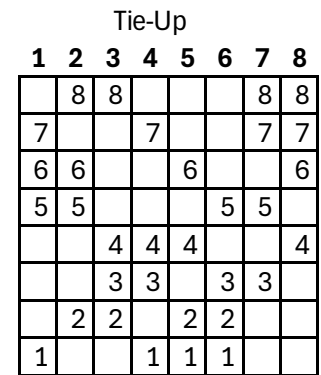
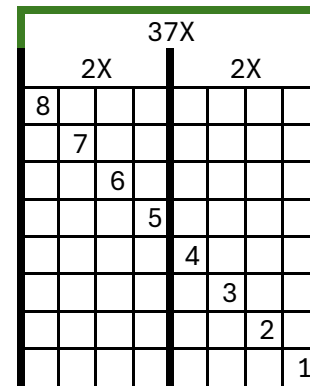
Treadling sequence follows on next page.

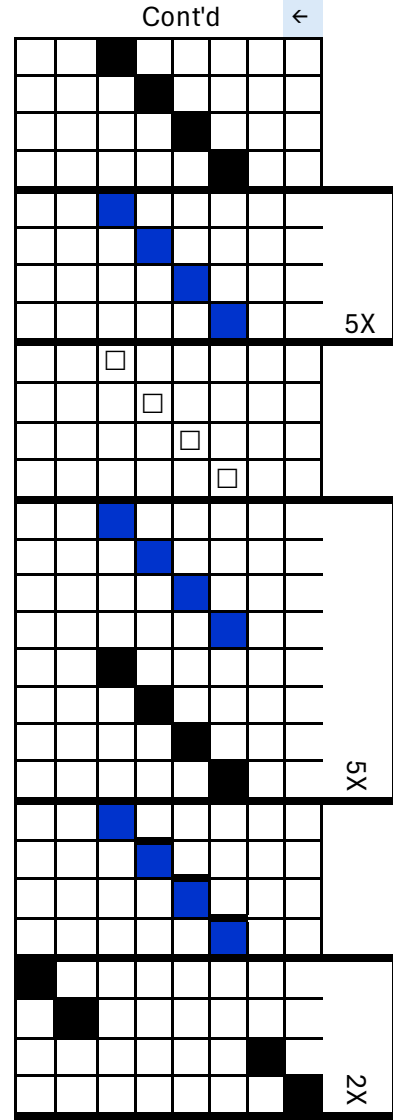
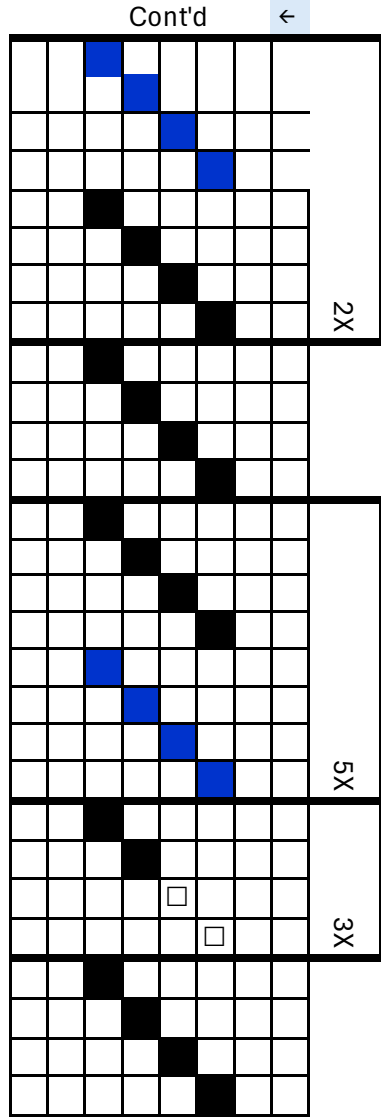
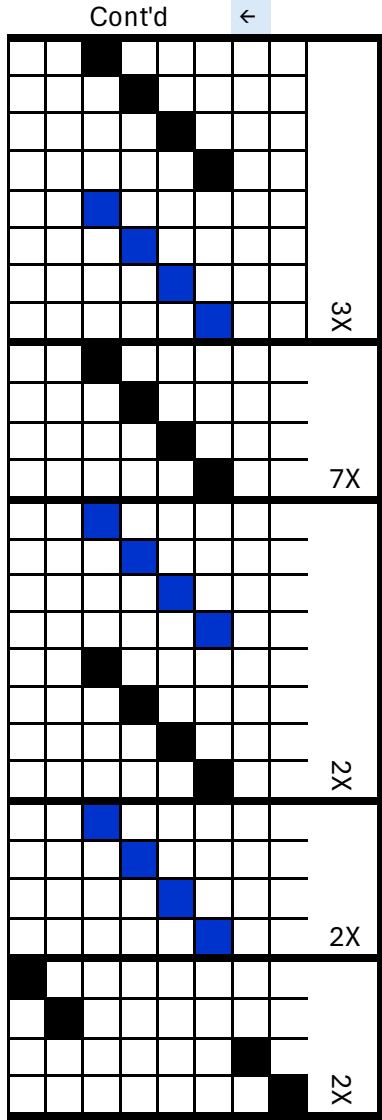
Weft colors

- Black
- Yale blue
- White

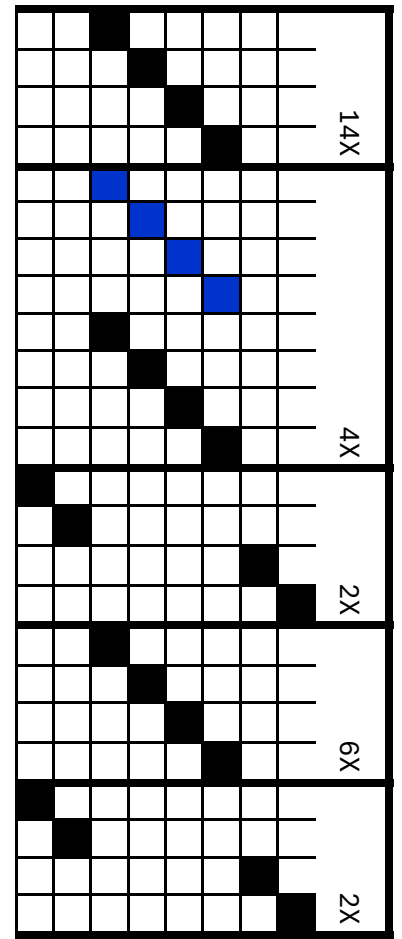


Threading →





	1	2	3	4	5	6	7	8
8		8					8	8
7				7			7	7
6		6			6			6
5		5				5	5	
4			4	4	4			4
3			3	3		3	3	
2		2	2		2	2		
1				1	1	1		



Cont'd ←

2X

3X

8X

4X

7X

Cont'd ←

2X

2X

4X

Cont'd ←

2X

8X

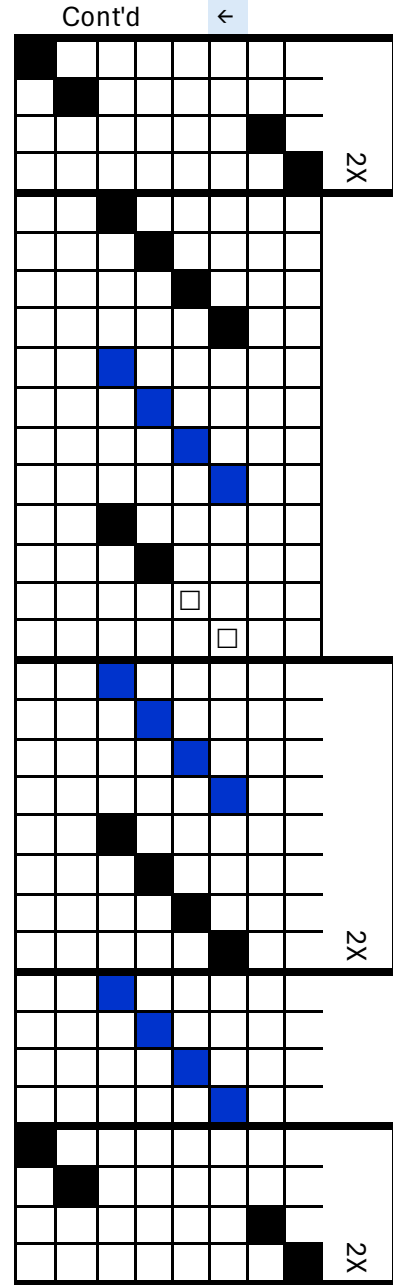
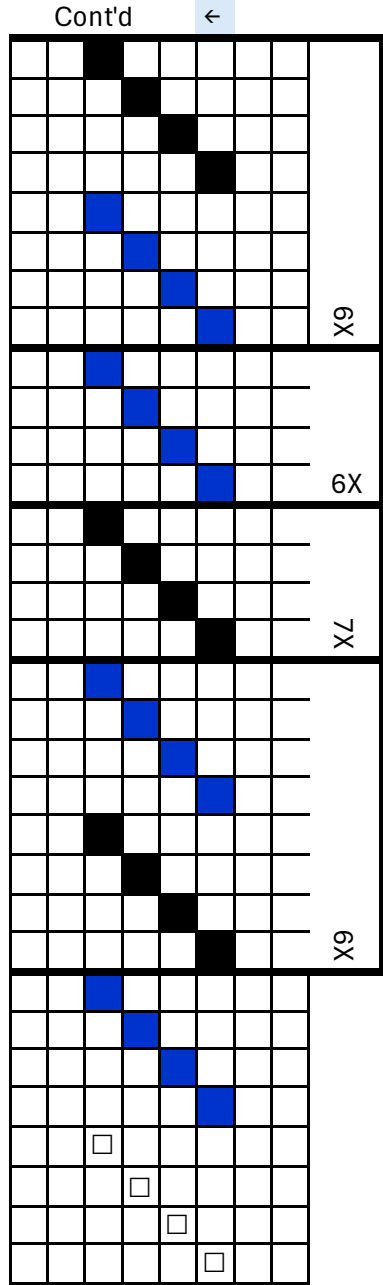
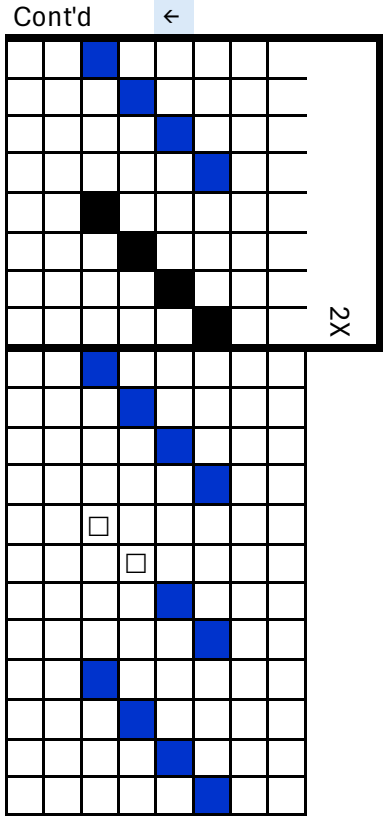
3X

10X

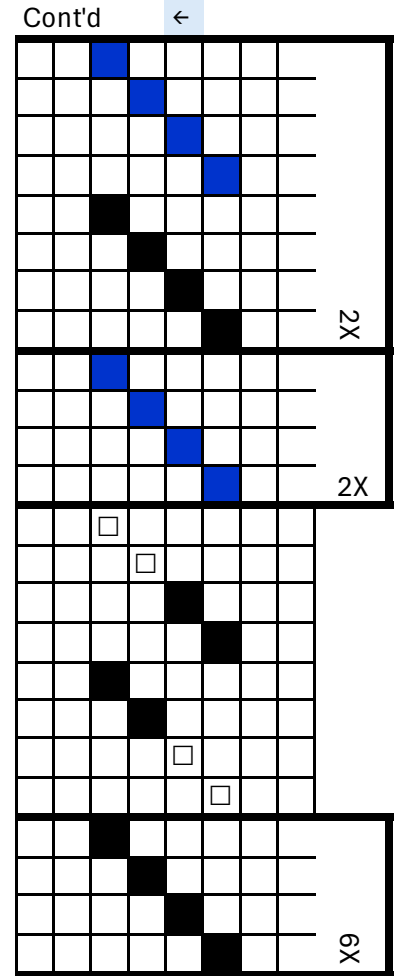
	1	2	3	4	5	6	7	8
8	8						8	8
7			7				7	7
6	6			6				6
5	5					5	5	
		4	4	4				4
		3	3		3	3		
	2	2		2	2			
1			1	1	1			

Cont'd ←

5X



	1	2	3	4	5	6	7	8
8		8	8				8	8
7				7			7	7
6		6			6			6
5		5				5	5	
4			4	4	4			4
3			3	3		3	3	
2		2			2	2		
1				1	1	1		



Repeat treadling sequence until scarf is 96"

Heddle count

- Shaft 8 74
- Shaft 7 74
- Shaft 6 74
- Shaft 5 74
- Shaft 4 74
- Shaft 3 74
- Shaft 2 74
- Shaft 1 74